

# Dentalone



## Helping You Care. Anywhere.\*

Dentalone offers a large range of instruments and extended functionalities, thus practitioners can realise dental treatments outside any dentist's office:

- NLX nano  
Electric Clinical Micromotors
  - Smaller and lighter micromotor currently available.
- Varios2 Lux  
Multi Function Ultrasonic Scalers
  - iPiezo engine ensures stable power output and performance.
- Multi Pad  
Multi-Control Panel for built-in system
  - Visual identification on the display is possible even during operation of the handpiece.

- Illuminated LCD control panel Multi Pad
- 40,000 min<sup>-1</sup> autoclavable brushless NLX nano micromotor with LED light, internal water and titanium body
- Integrated multi function ultrasonic scaler Varios 170 with LED light, slim and light weight VA2-LUX-HP handpiece
- 3-way air / water / spray syringe with LED light
- Saliva complete suction
- 500 mL water tank
- 1 Liter waste container



### Contents

- 1 Carrying Case
- 1 Water tank for spray
- 1 Tank for vacuum
- Built in compressor
- Built in suction pump
- 1 Variable Foot Control • 1 Extendable Tablet

### Dentalone Complete Set

MODEL	ORDER CODE
Dentalone	S9070

### Specifications

- Dimensions : Case with trolley (unpulled trolley handle) : W 351 x D 405 x H 545 (mm)  
Case with trolley (pulled trolley handle) : W 351 x D 405 x H 1,075 (mm)  
Without case : W 350 x D 405 x H 496 (mm)
- Working height : 766 mm
- Weight with case : 18.5 kg
- Power Supply : AC 100-230 V 50/60 Hz

\*Power connection required.




# VIVA ace



## Wherever Possible

### For more comfortable & more advanced home visits for dental treatment

As societies age more rapidly, there is an ever greater need for mobile dental treatment. Today's ageing population keeps more of their natural teeth, which means a wider range of treatments is required nearer to the patient. VIVA ace combines the functionality of a dental treatment centre in a compact body with multipurpose micromotor, ultrasonic scaler and more. Its lightweight build means it is easy to carry and straight forward to set up in different locations. The first of its kind with high-functionality, supports more comfortable dental treatment wherever the patient.

-  **Lightweight and Compact Body**
-  **High Functionality, Just Like a Treatment Centre**
-  **Straight Forward Set-up and Breakdown**

### Lightweight and Compact Body

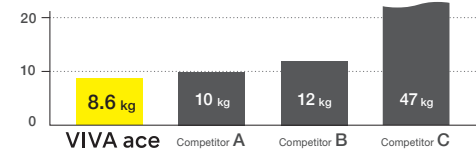
Highly manoeuvrable and lightweight, weighing only 8.6 kg. Its compact size is ideal for stowing in a car, is easily carried up and down stairs and fits into compact spaces. Simple to transport from one patient to another.

The small size has been achieved by making each component lightweight and compact without compromising functionality.

### All-in-one Package

A micromotor, ultrasonic scaler, 3 in 1 syringe and suction combined in a single compact body including storage space for all instruments.

### Lightweight at 8.6 kg ,\* it can be Taken Anywhere.



\*Weight without handpieces





### Highly Functional Portable Dental System Just Like a Treatment Centre

Excellent efficiency and safety are achieved via both the intuitive and highly visible large LCD control panel and the superb functionality provided by each individual instrument. A high functionality system just like a treatment centre.

### Advanced Functionality in a Compact Body



Photos are of optional extras.

### High Functionality Micromotor

Full endodontic functionality



NLX plus

Ideally suited for all requirements of state of the art dentistry

	Rotation speed (min <sup>-1</sup> )	Torque (Ncm)
General mode	1,000~40,000	4.0
Endodontic mode	100~5,000	0.3~3.0

### 3 in 1 syringe



Lightweight and simple operating 3 in 1 syringe. The syringe nozzle uses a simple quick release mechanism.

### Light Probe (optional)



isoE-LUX

### Multipurpose Ultrasonic Scaler

Comprehensive tip range



Varios2 Lux

### NSK iPiezo ultrasonic engine

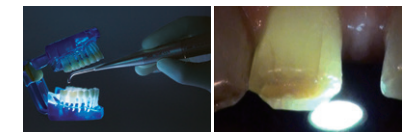
Provides the appropriate power at the tip end adapting to tooth conditions for firm or soft tartar. Safe scaling is possible even when removing hard tartar.

### Suction



Built in ball lever valve to adjust suction power.

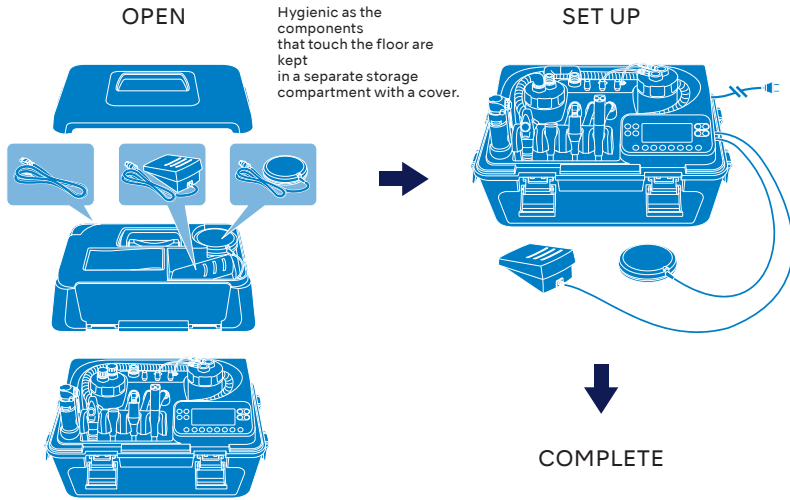
Bright illumination of the oral cavity in any treatment environment. Good accessibility with a slim body that also makes it possible to access hard-to-see areas.





### Quick Set up and Storage

Set up and storage is straight forward, simple and quick, making work more efficient and easier. The instrument holders and arm can be set at 4 different levels.



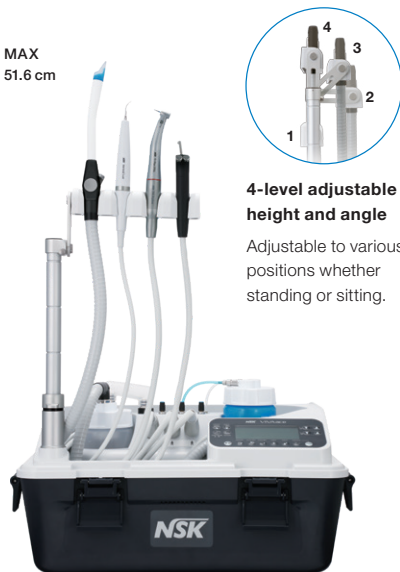
#### Storage is simple

Remove the handpieces for easy storage.



Very easy to maintain

MAX  
51.6 cm



# VIVA ace



MODEL	ORDER CODE
<b>VIVA ace 230 Complete Set</b>	<b>Y1003773</b>

#### Contents

- VIVA ace 230 Basic Set
- VIVA ace Motor Kit
- VIVA ace Scaler Kit

#### Specifications (Control unit)

- Dimensions : W 462 x D 298 x H 284 (mm)
- Unit weight : 8.6 kg
- Power Supply : AC 100-240 V 50/60 Hz
- Power source input : 130 VA



MODEL	ORDER CODE
<b>VIVA ace 230 Basic Set</b>	<b>Y1003774</b>

#### Contents

- Control unit
- AC Power Cord
- Foot Control (FC-76S)
- Foot Control (FC-70S)
- Top Case
- V-ace Vacuum Hose Set
- V-ace Vacuum Bottle Set
- V-ace Vacuum Nozzle (10)
- V-ace Water Bottle Set
- V-ace 3 way Syringe Set
- Shoulder Belt



MODEL	ORDER CODE
<b>VIVA ace Motor Kit</b>	<b>E1040002</b>

#### Contents

- Motor NLX plus
- Motor Cord
- Motor Cap
- Protection Plug



MODEL	ORDER CODE
<b>VIVA ace Scaler Kit</b>	<b>E351006</b>

#### Contents

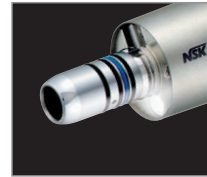
- VA2-LUX Handpiece
- Scaler Cord
- Tip (G6, G8)
- Tip Wrench
- Tip Holder

# VIVAMATE G5



**Portable LED Micromotor;  
From Denture Adjustment to General Applications**

## Internal Spray LED Micromotor



The compact size micromotor has been specifically developed for mobile dentistry and weighs only 148 g (w/cord) and features internal spray and LED light. Although fully portable it performs like an in-surgery system meeting a wide range of clinical requirements and is compatible with your existing contra-angles and straight handpieces<sup>1</sup> helping you to manage the cost of a mobile dentistry set-up.

<sup>1</sup> Conformable to ISO 3964.



## Able to Use Both Rechargeable Battery and AC Adaptor for The Compact Control Unit

Able to operate with rechargeable batteries anywhere. When battery power level is low, just plug in AC adaptor into outlet; bring the unit to patient visits without worry. It is very easy to carry since the control unit is palm-size (W 72 x D 180 x H 36 mm) and weighs only 370 g.

## Foot Control (Optional)

Conveniently adjust the motor speed by depressing the pedal of the foot control without taking your eyes of the treatment.



## Carrying Case

Comes with a carrying case designed for storing VIVAMATE G5 unit and its attachments.



## VIVAMATE G5 Complete Set

MODEL	ORDER CODE
<b>VIVAMATE G5 230V</b>	<b>Y1002801</b>

### Contents

- Control unit • Handpiece Stand • Motor (Including Motor Cord)
- AC Adaptor • AC Power Cord • Carrying Case

### Specifications

[Control Unit]

- Dimensions : W 72 x D 180 x H 36 (mm)
- Weight : 370 g Charge/Continuous use : 2 h / 1 h (depending on workload)

[Micromotor]

- Dimensions : ø22 x L 68.6 (mm) • Weight: 148 g (Include Motor cord)
- Speed: 3,000-30,000 min<sup>-1</sup> • Torque: 3 Ncm (30,000 min<sup>-1</sup> while rotating)